

SAN PEDRO DRIVE LANE CONVERSION

MARBLE TO INDIAN SCHOOL

Informational Meeting

September 17, 2014



Parametrix

EXISTING CONDITIONS - CRASHES

- Between Marble and Indian School– 160 crashes in three years
 - 50% rear-ends
 - 18% left-turns
 - 13% sideswipes
- Slightly lower crash rate during State Fair
- San Pedro crash rate: 9.5 per MVM

*Bernalillo County average:
2.8 per MVM*



EXISTING CONDITIONS - ACCESS

- Between Marble and Indian School (1 mile)
 - 14 side street intersections
 - About 50 driveways

*Large speed differentials
between through and turning
vehicles –
a big causes of crashes*



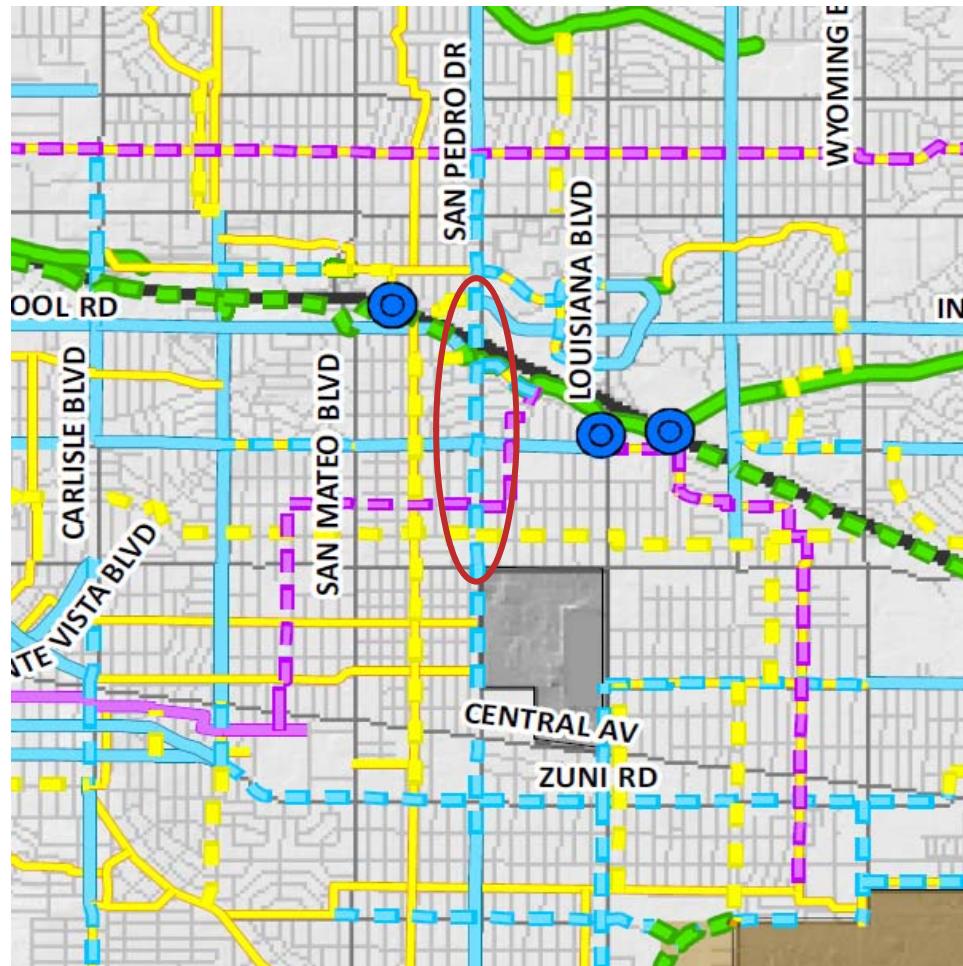
EXISTING CONDITIONS – PEDESTRIAN CROSSINGS

- Half mile between signalized pedestrian crossings at Lomas and Constitution

If pedestrians cross mid-block they have to cross all four lanes at once



EXISTING CONDITIONS – PLANNING DOCUMENTS

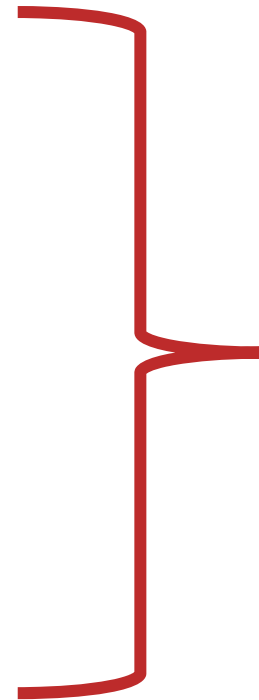


San Pedro

Parametrix

PROBLEM STATEMENT

- Higher than average crash rate, partly the result of having no dedicated left turn lane
- Difficult pedestrian crossing
- No bike lanes, which are shown in the Long-Range Bikeway System Map



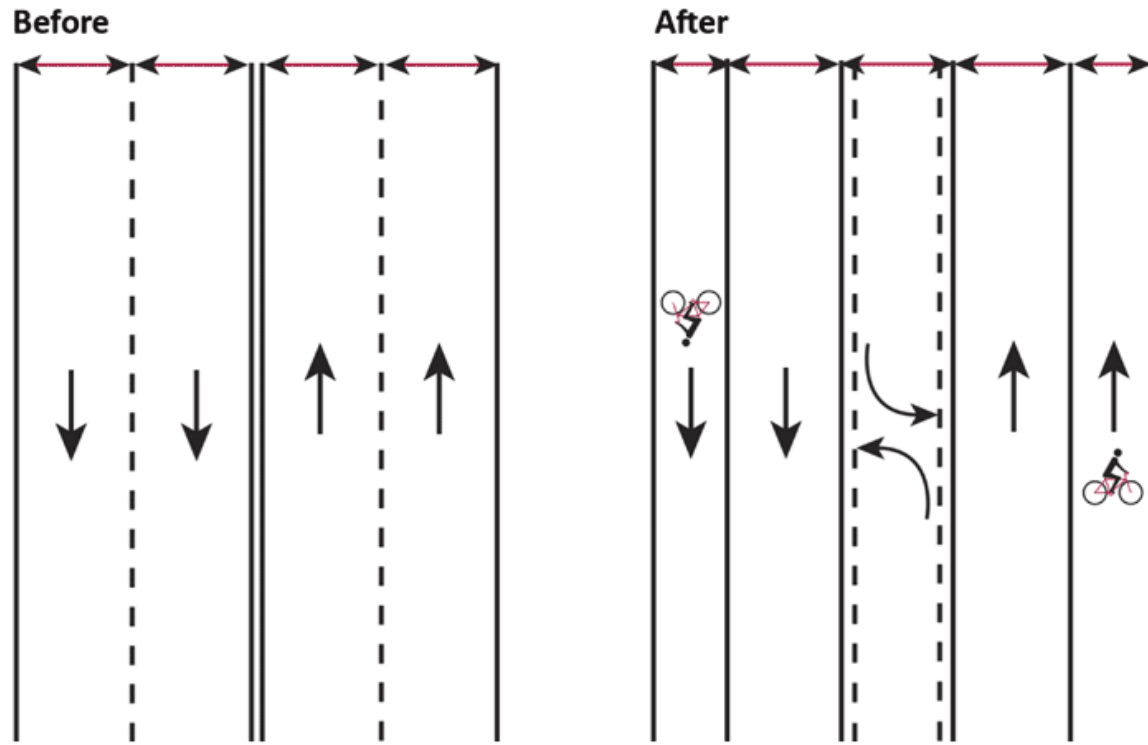
Make San
Pedro
difficult to
access

PURPOSE OF THE PROJECT

- Implement modifications to decrease the crash rate by creating a dedicated left-turn lane
- Make it easier to access driveways and side streets
- Make it easier for pedestrians to cross mid-block
- Provide the bike lanes that are shown in the Long-Range Bikeway System Map



CITY'S PROPOSAL – TRAFFIC LANE CONVERSION



CITY'S PROPOSAL - OTHER

- Mile-Hi District branding
- Installation of marquee signage
- Street lighting, landscaping, street furniture
- Improvements for bike boulevard crossing at Mountain Road



WHAT WILL THIS DO TO TRAFFIC?

ACCESS

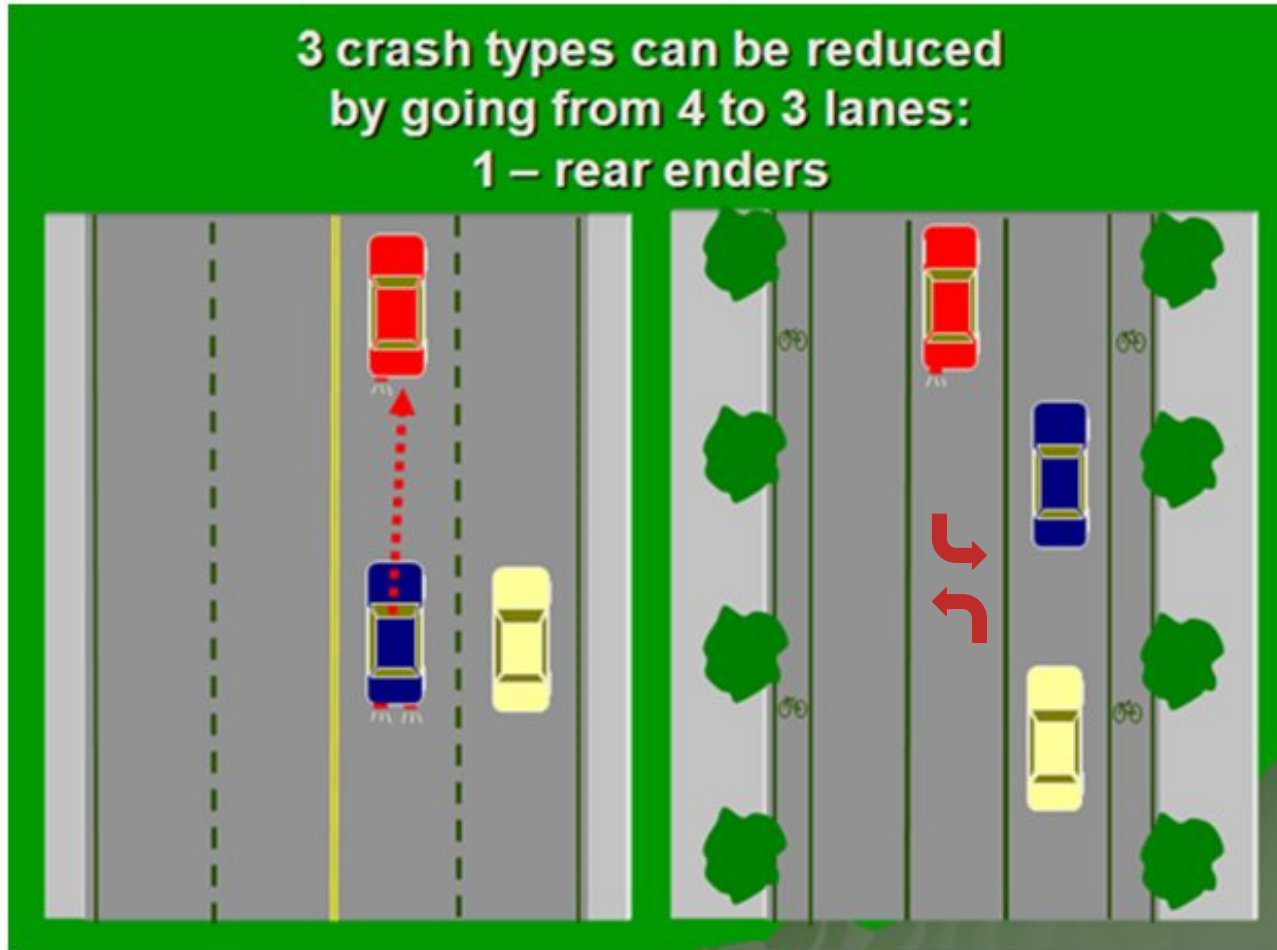
- When making a left turn off San Pedro you can get out of the through lane of traffic and not be concerned about being rear-ended
- When making a left turn out of a driveway or side street you can make a “two step turn” by waiting in the center turn lane



WHAT WILL THIS DO TO TRAFFIC?

CRASHES

3 crash types can be reduced
by going from 4 to 3 lanes:
1 – rear enders



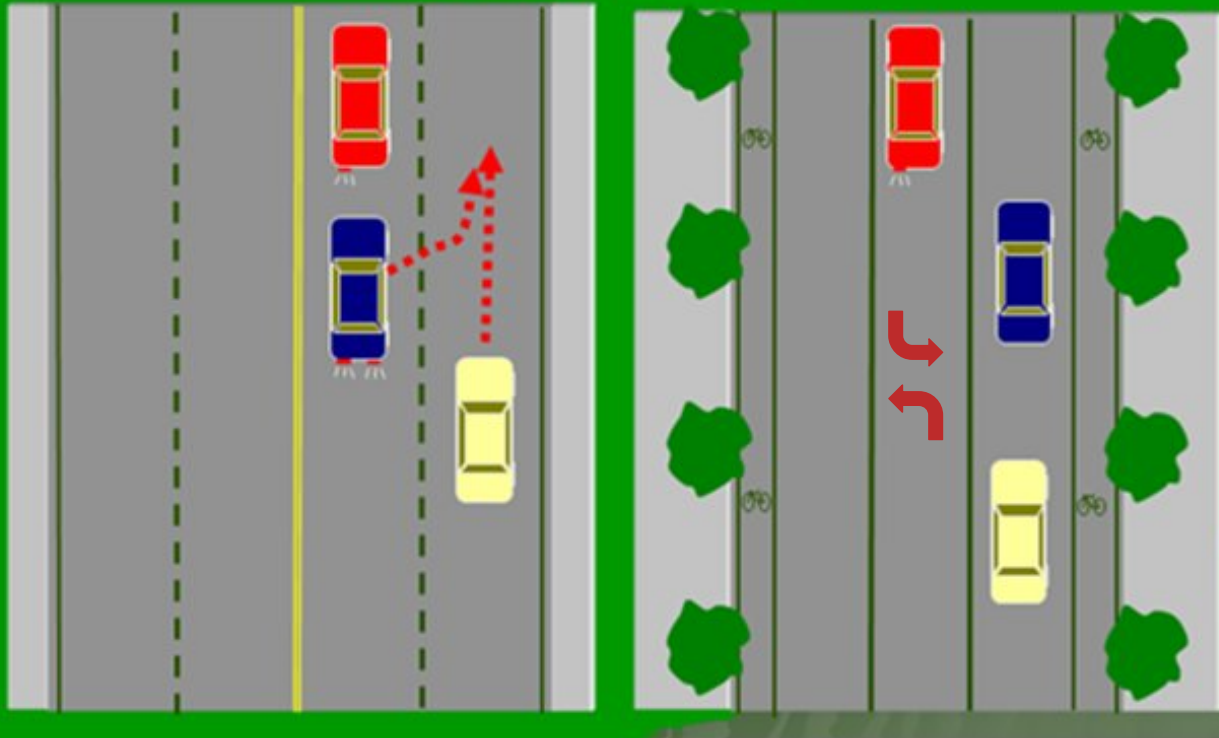
Credit: www.fresno.gov

Parametrix

WHAT WILL THIS DO TO TRAFFIC?

CRASHES

3 crash types can be reduced
by going from 4 to 3 lanes:
2 – side swipes



Credit: www.fresno.gov

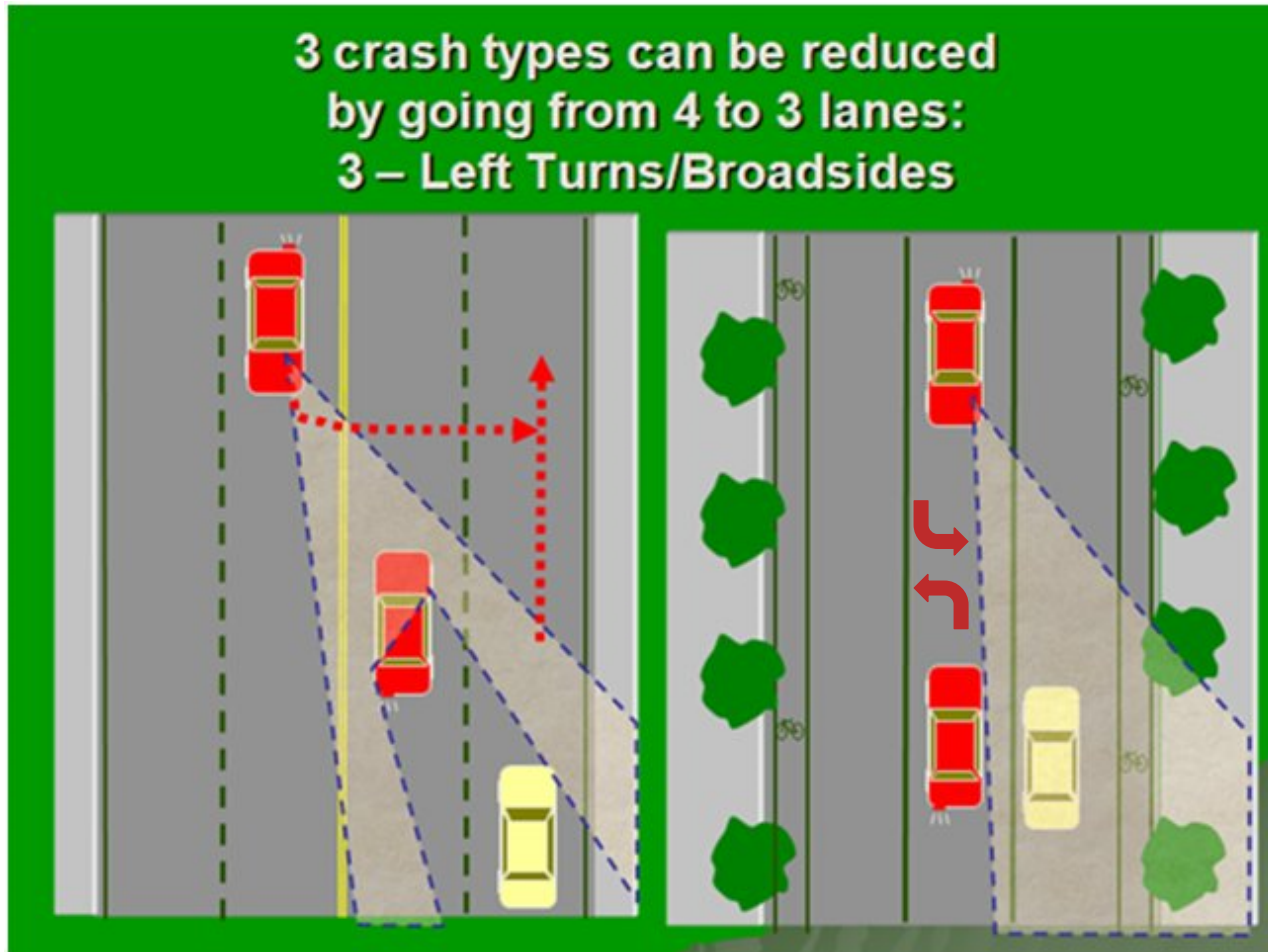


Parametrix

WHAT WILL THIS DO TO TRAFFIC?

CRASHES

3 crash types can be reduced
by going from 4 to 3 lanes:
3 – Left Turns/Broadsides



*Highway
Safety Manual
gives CMF of
0.71 for 4-lane
to 3-lane road
conversions*

Credit: www.fresno.gov

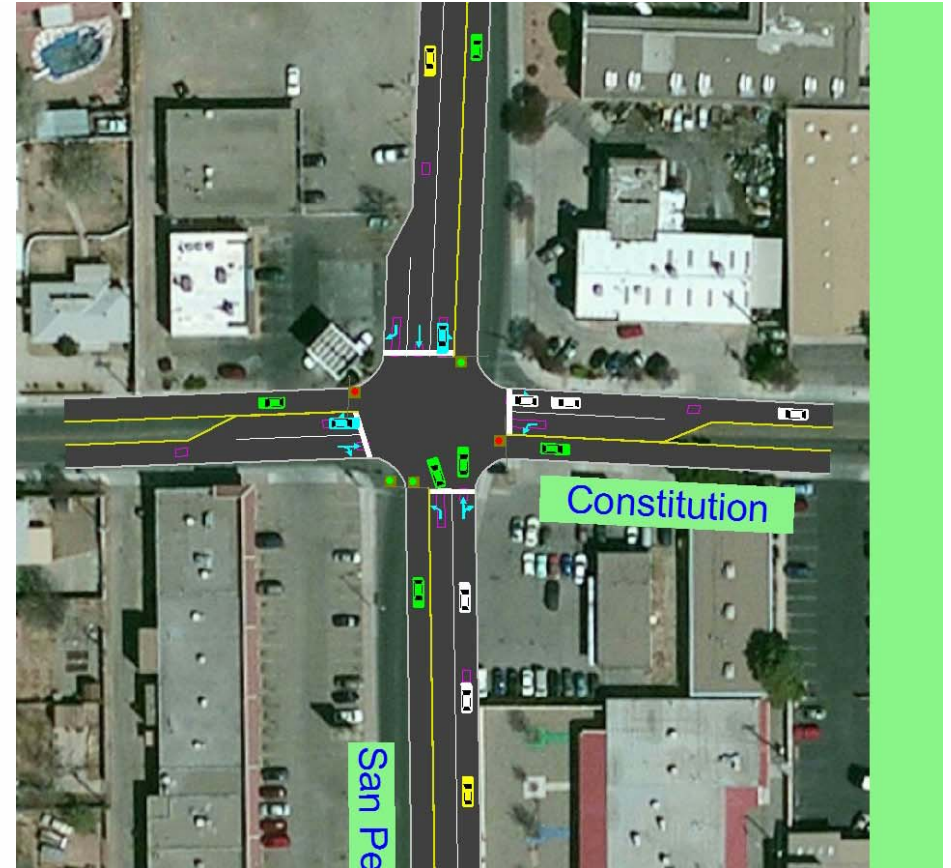


Parametrix

WHAT WILL THIS DO TO TRAFFIC? CAPACITY



EXISTING CONDITIONS



WITH 3-LANE SECTION

Parametrix

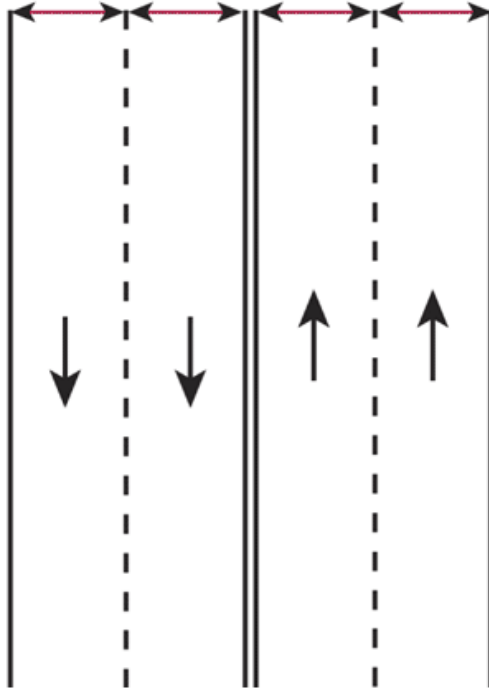


DOWNSIDE OF FOUR LANE UNDIVIDED ROADS

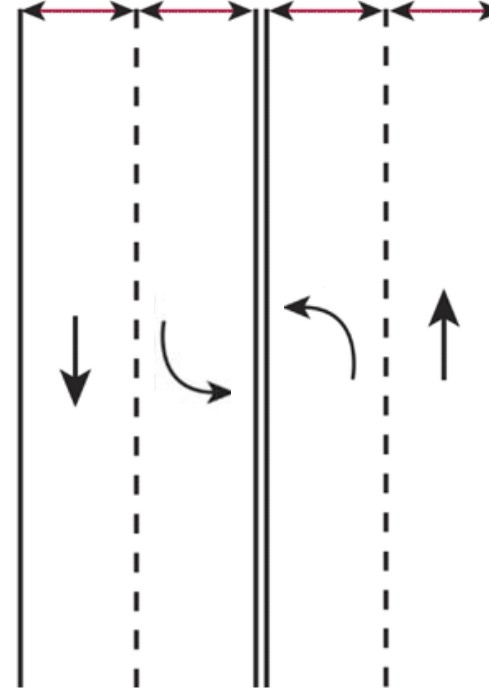


CITY'S PROPOSAL – TRAFFIC LANE CONVERSION

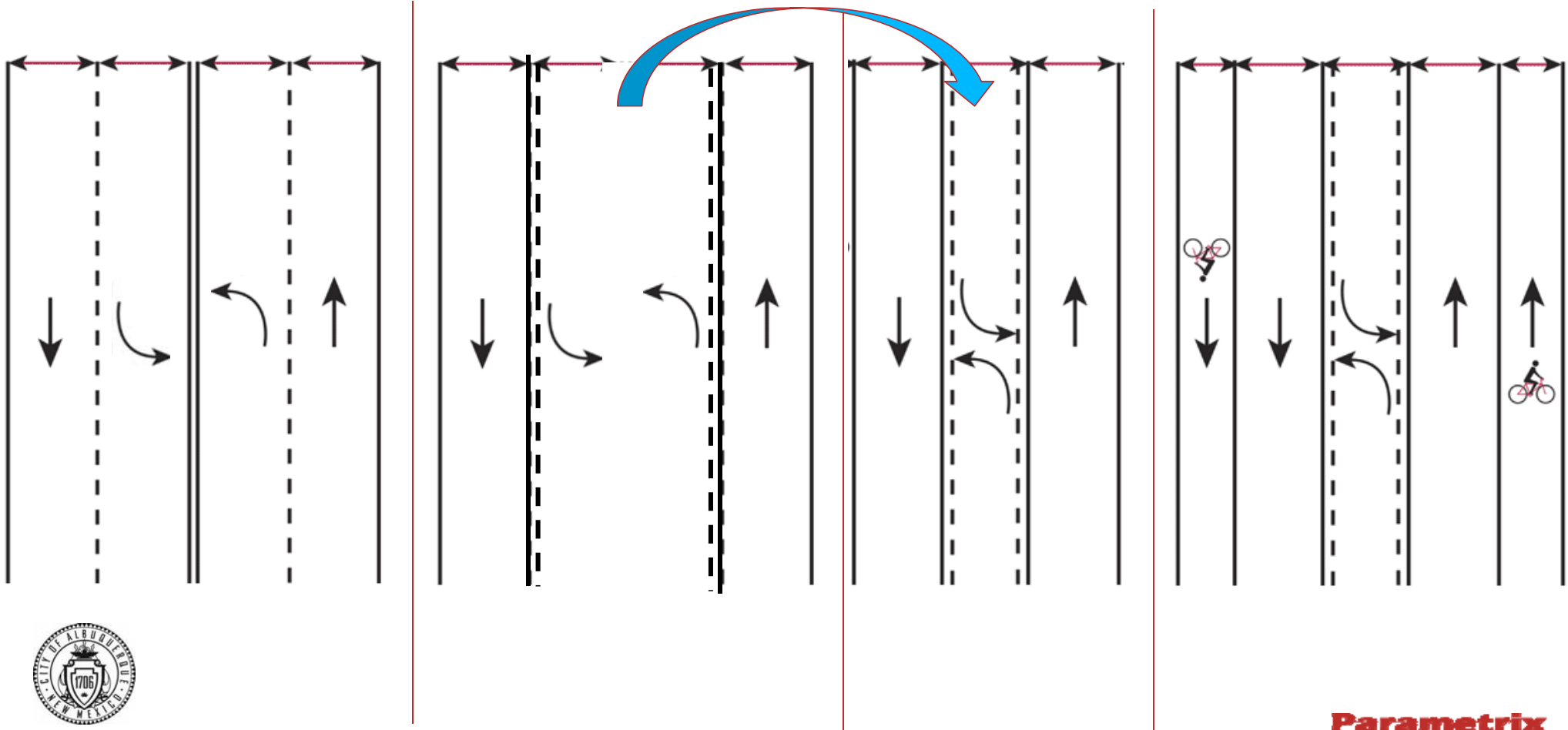
How San Pedro is Striped



How San Pedro Operates



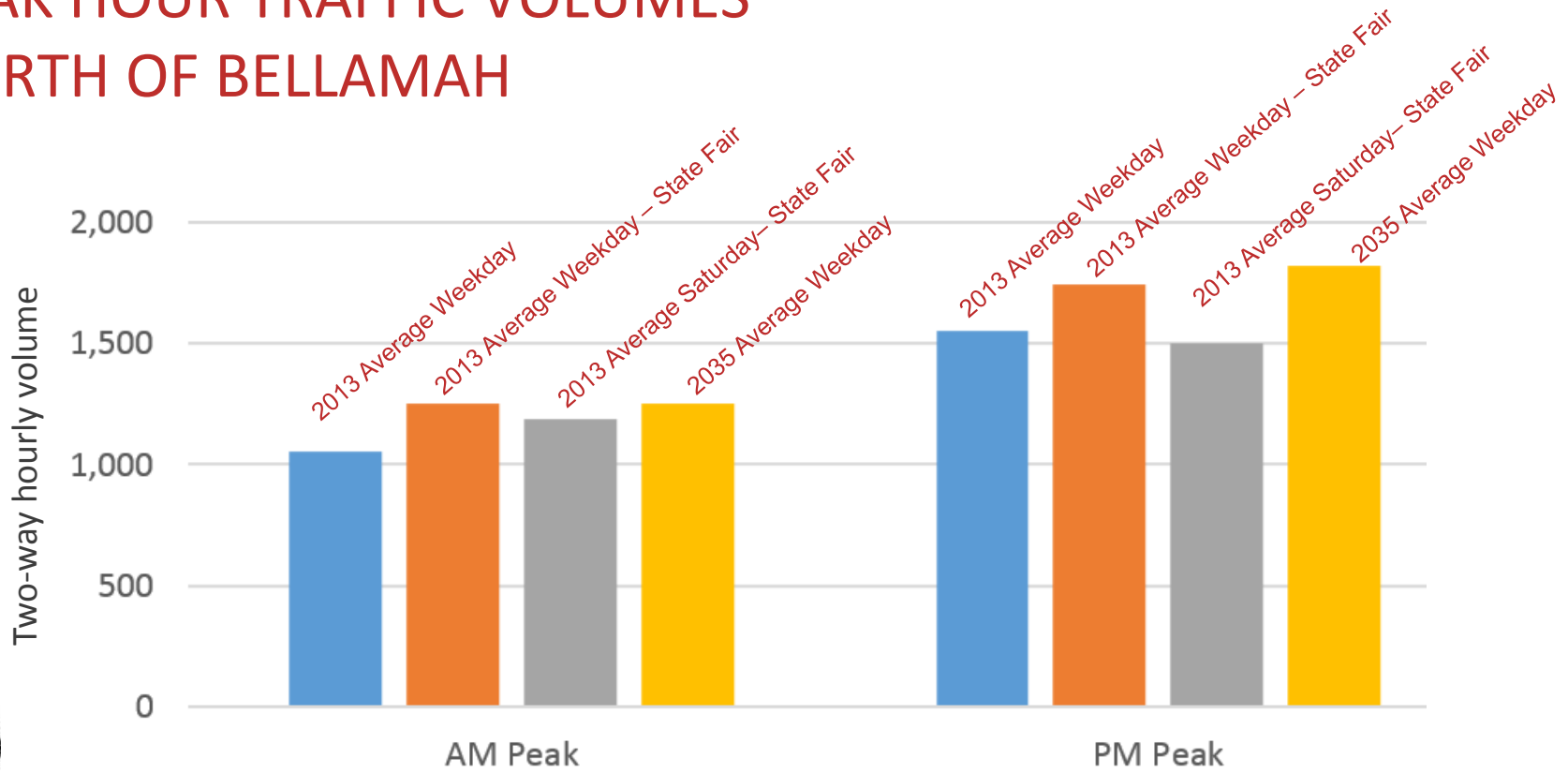
CITY'S PROPOSAL – TRAFFIC LANE CONVERSION



Parametrix

WHAT ABOUT FUTURE OPERATIONS?

PEAK HOUR TRAFFIC VOLUMES NORTH OF BELLAMAH



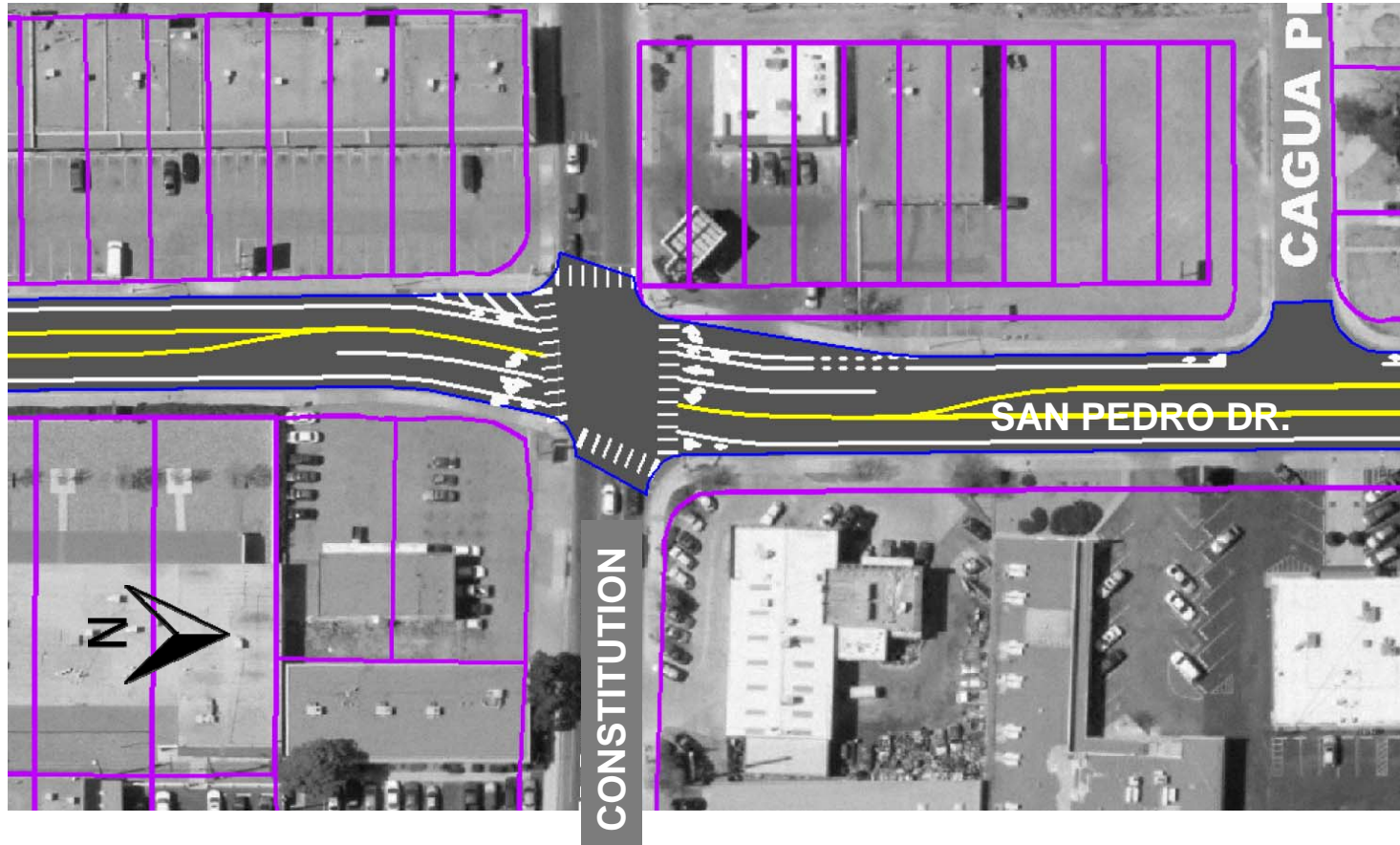
BIKE BOULEVARD CROSSING OF SAN PEDRO AT MOUNTAIN RD.



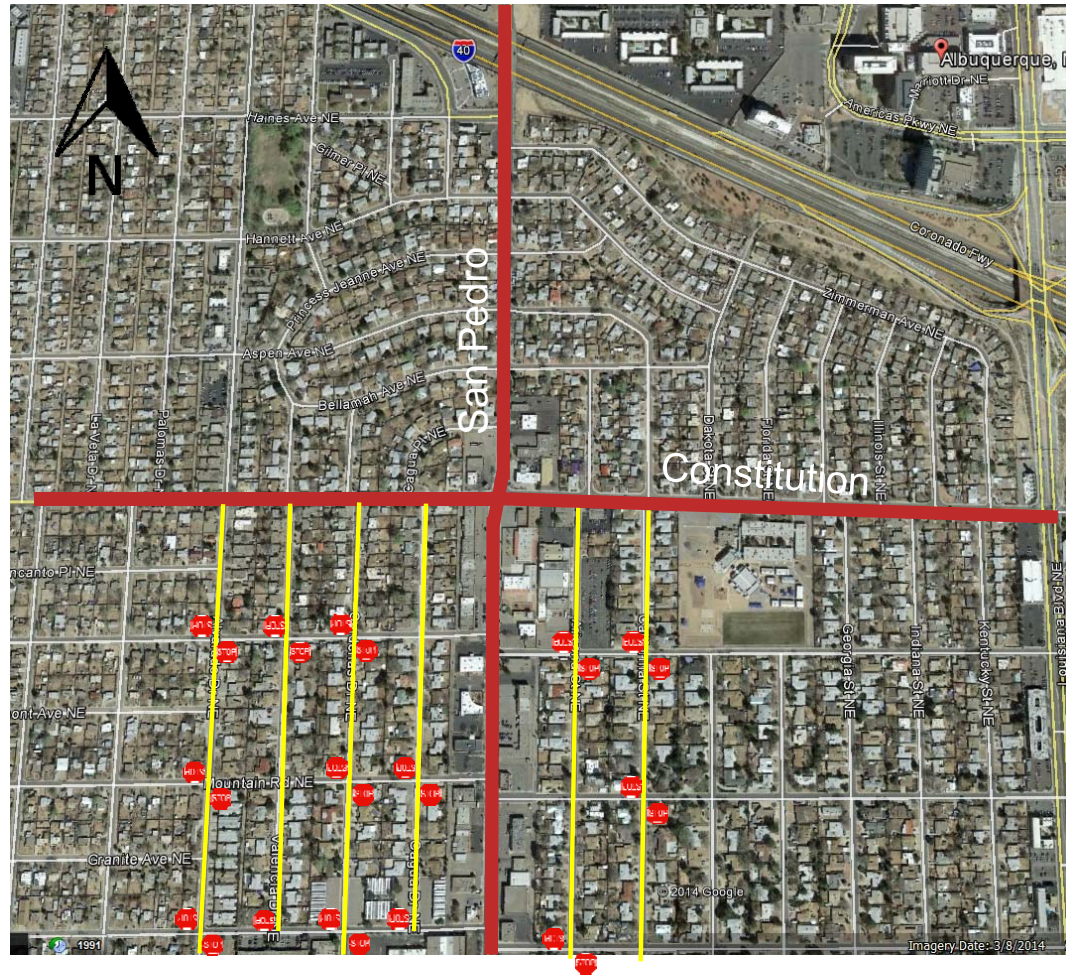
Parametrix

CONCEPT ONLY

CHANGES AT SAN PEDRO/CONSTITUTION INTERSECTION



WILL TRAFFIC DIVERT TO THE SIDE STREETS?



CONCLUSIONS

- Because of the frequent access along San Pedro, creating a dedicated left-turn lane is expected to increase safety without the loss of capacity
- Future traffic volumes are not expected to increase to a level that would change the first conclusion
- The new cross section will make it easier for pedestrians to cross mid-block
- By combining the two existing de facto left-turn lanes, space can be made for on-street bike lanes

